

## Digi-Link P350 Cat6 Cabling Systems



### Description

**Incredible Enhanced System Performance at an unbelievable price.**

Channel Performance specifications exceed not only the TIA 568B.2-1 & ISO 11801 Category Class E cabling systems but also are capable of providing stable and continual performance upto 350 MHz. Digi-Link P350 System, when installed by a Digi-Link Certified Cabling Engineer (DCCE), attracts a 20 year Performance Warranty on the entire system.

### Benefits and Features

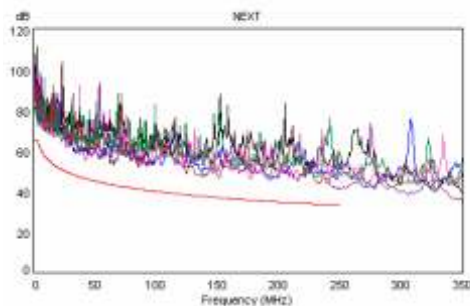
- ✓ Performance optimized to 350 MHz for Channel
- ✓ Performance guaranteed to meet or exceed Category 6/Class E Channel Specifications to 250 MHz
- ✓ Exhibits a minimum of 6 times more headroom/margin than that specified by standards in a Channel at 250 MHz.
- ✓ The uniquely designed keystone jacks in the premium range with **RFT** technology (refer Terms and Logos for more details), exhibit higher margin and performance than the existing products in the same category. These jacks are designed to give consistent performance for over 20 years.
- ✓ Cables and the Components are UL Listed and UL & ETL Verified for Channel
- ✓ Reliability of the data being send across the Channel is Verified for Zero Bit Error by ETL.
- ✓ Supports IEEE 802.3 1000BASE-T, TIA-854-A 1000BASE-TX, ATM Forum CBIG, other legacy LANs and applications (Video, BAS)
- ✓ Backward compatible with existing Digi-Link cabling and connecting Hardware.

### Performance Characteristics TIA/EIA-568-B2-1

FREQUENCY (MHz)	INSERTION LOSS (Attenuation) dB/100m		NEXT (db)		PSNEXT (db)		ELFEXT (db)		PSELFEXT (db)		RETURN LOSS (db)	
	Standard	Digi-Link	Standard	Digi-Link	Standard	Digi-Link	Standard	Digi-Link	Standard	Digi-Link	Standard	Digi-Link
0.72	1.8	1.1	76.0	83.3	74.0	80.2	70.0	87.2	67.0	77.2		28.2
1.00	2.0	1.6	74.3	79.2	72.3	76.7	67.8	82.3	64.8	75.7	19.0	24.7
4.00	3.8	3.2	65.3	72.9	63.3	69.1	55.8	70.2	52.8	63.6	19.0	29.7
8.00	5.3	4.9	60.8	71.1	58.8	65.2	49.7	64.9	46.7	58.7	19.0	27.0
10.00	6.0	5.5	59.3	70.8	57.3	63.6	47.8	64.5	44.8	57.9	19.0	28.1
16.00	7.6	7.1	56.2	71.3	54.2	63.8	43.7	60.1	40.7	55.7	18.0	31.6
20.00	8.5	7.9	54.8	68.4	52.8	60.7	41.8	59.1	38.8	52.5	17.5	28.9
25.00	9.5	8.8	53.3	64.4	51.3	56.0	39.8	57.4	36.8	49.4	17.0	27.9
31.25	10.7	9.2	51.9	60.7	49.9	54.3	37.9	57.3	34.9	47.5	16.5	30.9
62.50	15.4	13.0	47.4	56.0	45.4	48.3	31.9	46.0	28.9	39.4	14.0	20.5
100.00	19.8	16.2	44.3	52.2	42.3	45.3	27.8	44.8	24.8	36.5	12.0	18.2
200.00	29.0	23.6	39.8	46.1	37.8	39.9	21.8	36.4	18.8	28.8	9.0	16.0
250.00	32.9	26.6	38.3	45.2	36.3	38.0	19.8	36.7	16.8	29.7	8.0	16.4
300.00	**	32.0	**	43.3	**	37.5	**	37.4	**	29.4	**	15.2
350.00	**	38.2	**	41.7	**	35.9	**	33.7	**	26.6	**	13.1

\*\* Extrapolated Values

Typical NEXT Loss



Typical Return Loss

