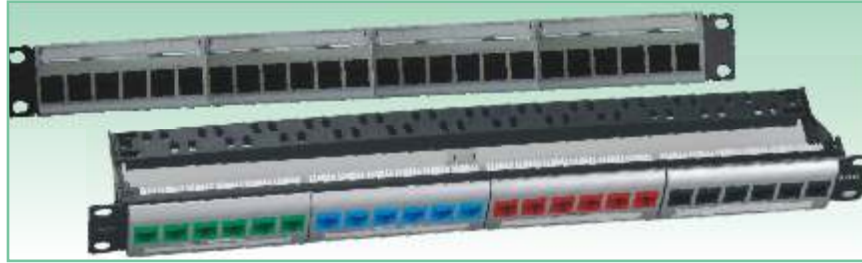


Category 6A (10G) UTP Patch Panels



RFT*

Description

The design of Digi-Link P800 10G Classic Series of patch panels for termination of horizontal & backbone cabling boasts of an excellent feature of labeling as per latest standard. Our 10G Classic Series of patch panel offers performance, economics & unparalleled signal integrity and minimizes noise disturbances by incorporating new designs and features. The 10G keystone connector resists Alien Crosstalk (major concern of 10G technology) between neighboring installations and ensures smooth and uninterrupted flow of data to the workstation. By design this patch panel is lightweight with easy mounting cable management to manage the looks, performance and aesthetics of the cords in a telecom rack. It also features an excellent cable tie provision for sturdy & displayed cable management. The Sturdy Plastic Moulded cable manager is uniquely designed to bear the cable traffic without any hassles & also take care of the cable kinks at rear end during installations. The 10G Classics series patch panel feature standard compatibility and colour-coded wiring labels including applicable T568A/T568B wiring patterns for dual flexibility and fast, accurate termination. These 10G information outlets are fully compliant with published TIA/EIA 568B. 2-1 (addendum 10) Cat6A standards and meet or exceed industry standards.

Benefits and Features

- ✓ This rack mount type unshielded keystone patch panel comes with a design which has redefined engineering elegance.
- ✓ It is a three piece structure that includes Robots slim designed front panel cable management brackets and cable manager rigid plastic bar.
- ✓ The elegant cable management plate.
- ✓ Perforated cable tie holes that helps in routing cables and provides a perfect strain relief.
- ✓ The front plate has icon holders which help identify the media used such as computer, telephone, etc.
- ✓ The high performance, high density keystone connectors meet and exceed EIA/TIA 568 B.2-1 Cat 6A specifications.
- ✓ Keystone Jacks snap fit -able on the metal case and can be easily removed whenever required.
- ✓ Silver painted plastic dressing on the patch panels give a new and richer appeal.

Physical and Mechanical Properties

Dimensions	442.6mm x 44.5mm (19" - 1U)
Material	Steel, Powder coated
Number of Ports	24/48
Performance	Exceeds TIA/EIA 568 B. 2-1 Cat6A Standards
Plug Insertion Life:	750 cycles (min)
Spring Contact:	50µ" gold over 100µ" nickel
Current Rating:	1.5 A (max)
Insulation Resistance:	500 mΩ (min)
Contact Resistance:	15 mΩ (max)
Supports industry standards for (T568A) or (T568B) wiring options	
RFT technology unbuilt in the Jacks gives superior performance	

Performance Characteristics TIA/EIA-568-B2-10

FREQUENCY (MHz)	INSERTION LOSS (Attenuation) dB/100m		NEXT (db)		PSNEXT (db)		ELFEXT (db)		PSELFEXT (db)		RETURN LOSS (db)	
	Standard	Digi-Link	Standard	Digi-Link	Standard	Digi-Link	Standard	Digi-Link	Standard	Digi-Link	Standard	Digi-Link
1.00	2.1	1.9	74.3	90.5	72.3	88.6	67.8	82.6	64.8	80.8	19.1	31.5
4.00	3.8	3.1	65.3	85.9	63.3	82.8	55.8	70.0	52.8	68.8	21.0	36.4
8.00	5.3	4.3	60.8	72.0	58.8	71.6	49.7	64.2	46.7	63.2	21.0	33.1
10.00	5.3	4.8	59.3	75.9	57.3	72.7	47.8	62.8	44.8	61.9	21.0	32.7
16.00	5.9	6.1	56.2	71.5	54.2	69.8	43.7	58.7	40.7	58.1	20.0	34.3
20.00	7.5	6.8	54.8	70.9	52.8	67.9	41.8	57.7	38.8	56.5	19.5	33.4
25.00	8.4	7.6	53.3	63.1	51.3	61.7	39.8	56.7	36.8	55.1	19.0	31.6
31.25	9.4	8.6	51.9	68.1	49.9	64.7	37.9	51.7	34.9	50.1	18.5	32.5
62.50	10.5	12.4	47.4	65.8	45.4	62.0	31.9	44.6	28.9	43.9	16.0	28.2
100.00	15.0	15.9	44.3	56.7	42.3	53.5	27.8	41.4	24.8	39.7	14.0	24.9
200.00	19.1	23.0	39.8	49.2	37.8	47.2	21.8	31.8	18.8	30.7	11.0	20.2
250.00	27.6	26.0	38.3	45.4	36.3	41.9	19.9	31.7	16.9	30.3	10.0	18.1
300.00	31.1	28.9	37.2	41.5	35.2	40.3	18.3	29.4	15.3	27.8	8.4	17.0
400.00	34.3	33.9	35.3	34.5	33.3	33.6	15.8	29.7	12.9	26.5	6.0	14.6

* Register Trademark of Leviton USA.

Category 6A (10G) UTP Patch Panels

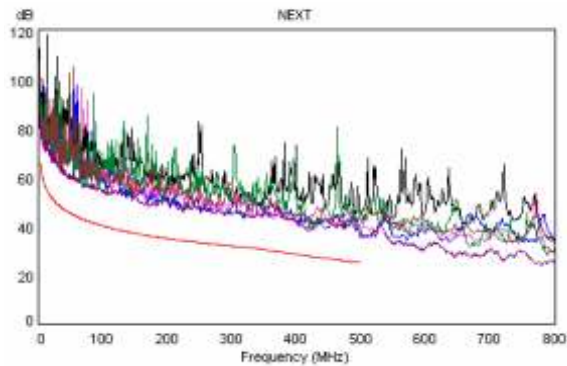
Performance Characteristics TIA/EIA-568-B2-10

FREQUENCY (MHz)	INSERTION LOSS (Attenuation) dB/100m		NEXT (db)		PSNEXT (db)		ELFEXT (db)		PSELFEXT (db)		RETURN LOSS (db)	
	Standard	Digi-Link	Standard	Digi-Link	Standard	Digi-Link	Standard	Digi-Link	Standard	Digi-Link	Standard	Digi-Link
500.00	40.1	38.4	33.8	29.1	31.8	27.7	13.9	26.3	11.0	24.5	6.0	12.9
600.00	**	40.2	**	32.6	**	31.8	**	40.5	**	23.3	**	15.0
700.00	**	43.4	**	31.4	**	30.6	**	28.4	**	27.1	**	14.9
800.00	**	47.0	**	29.9	**	28.2	**	21.0	**	23.4	**	13.7

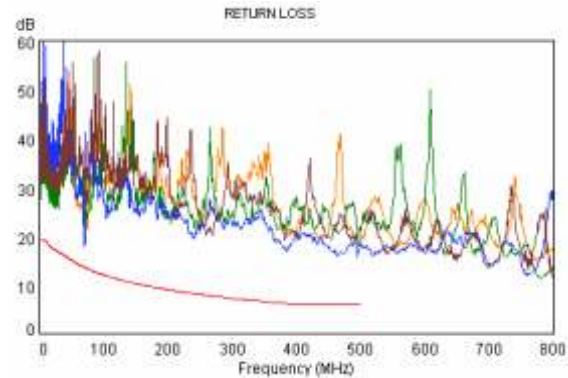
** Extrapolated Values

Characteristic Impedance	100±6 Ω @ 1-600 MHz
DC Resistance	72 Ω/km max.
Resistance unbalance	2% max.
Capacitance	45 pF/m nom. @ 1 KHz
Cap. Unbalance (wire to ground)	1500 pF/km max. @ 1 KHz.
Voltage rating	72 Vdc max.
Dielectric strength	1500 V/1 minute min rms
Velocity of Propagation (NVP)	67-69%
Insulation Resistance	500 mΩ km min. @ 500 Vdc
Coupling attenuation	40 dB min @ 30-100 MHz 40-20Log(f/100) @100-600 MHz
Transfer Impedance	N/A

Typical NEXT Loss



Typical Return Loss



Ordering Information

P/N	Description	No. of Ports	Size	Wiring
DCTPP24UKY1U	Patch Panel Cat6A (10G) Unshielded keystone type	24	1U	EIA/TIA 568 A/B
DCTPP48UKY2U	Patch Panel Cat6A (10G) Unshielded keystone type	48	2U	EIA/TIA 568 A/B
DCTPP24UAKY1U	Angled Patch Panel Cat6A (10G) Unshielded keystone type	24	1U	EIA/TIA 568 A/B
DCTPP48UAKY2U	Angled Patch Panel Cat6A (10G) Unshielded keystone type	48	2U	EIA/TIA 568 A/B